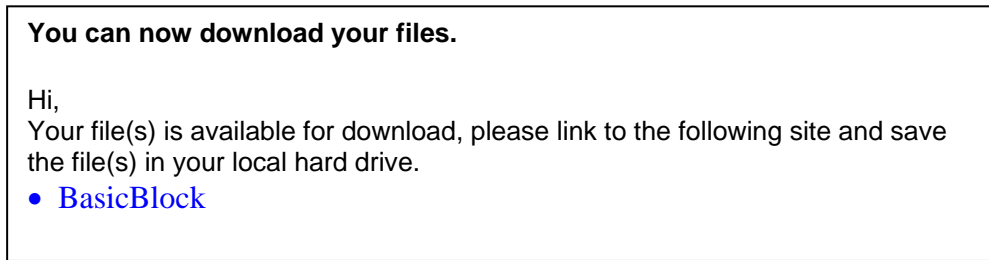
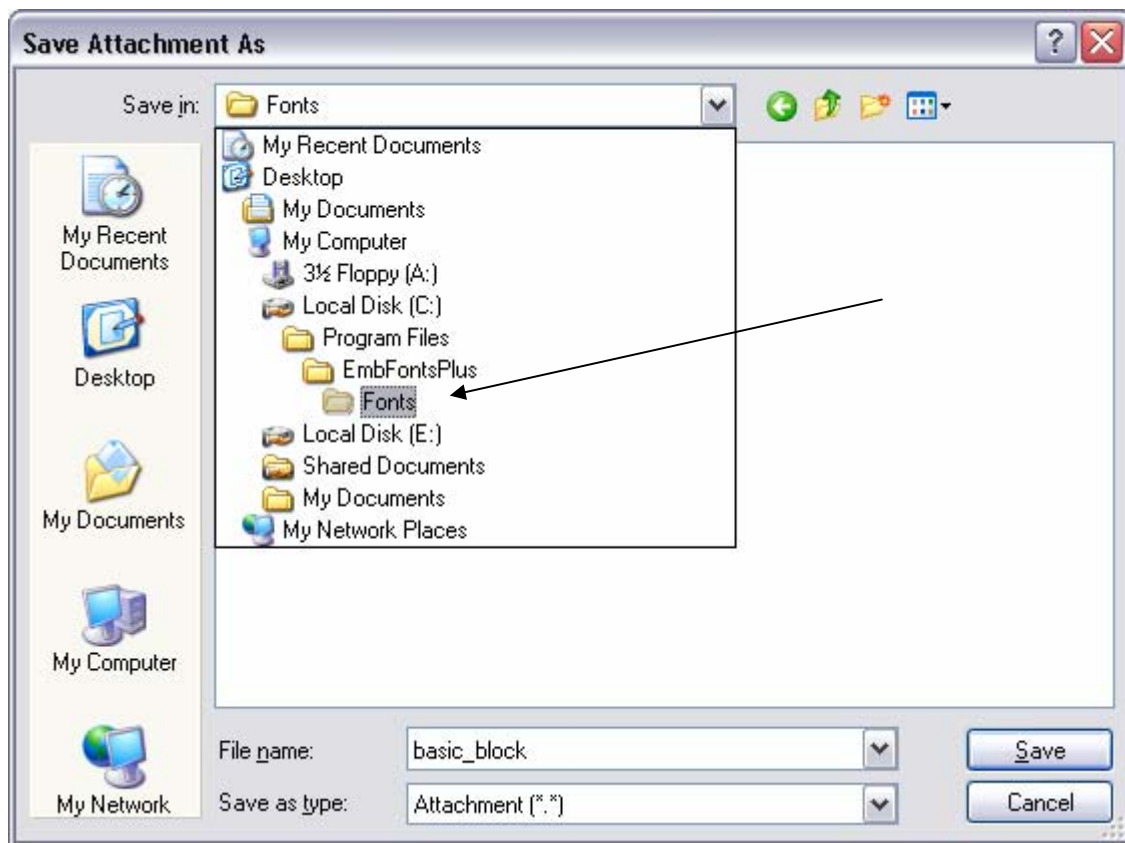


## How do I install/save newly purchased fonts?

1. After the payment process has been successful, you will need to check the inbox of your registered e-mail address.
2. Follow the instructions in the email to download the file.
3. The below is an example of how your inbox email will appear.



4. Please save the file into **C:\Program Files\EmbFontsPlus\Fonts** folder.
  - a) Click on "C" Local Disk
  - b) Click on **Program Files**
  - c) Click on **EmbFontsPlus**
  - d) Click on **Fonts**
  - e) Click on "Save"



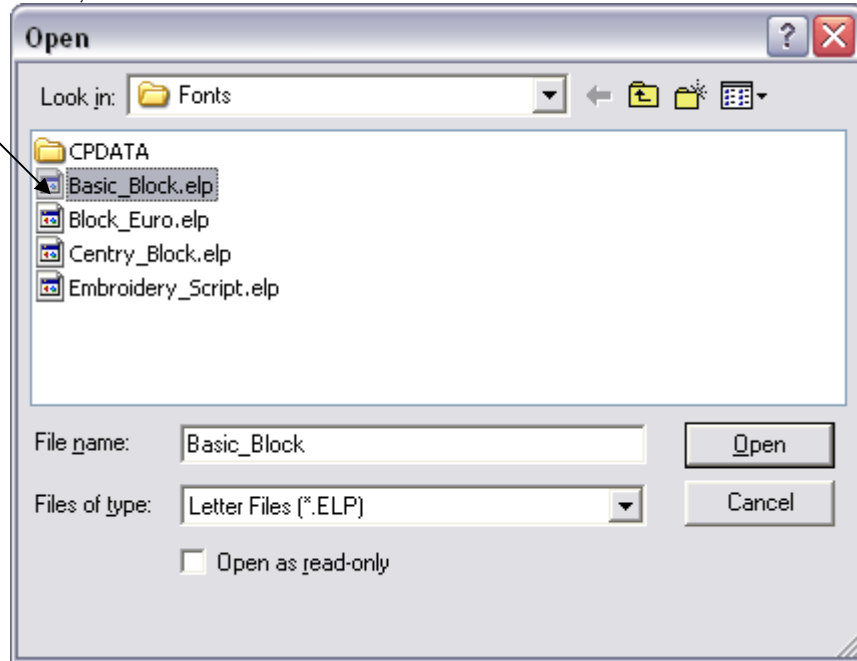
5. The purchased font is now in the Embroidery Fonts Plus software and ready to be used.
6. Select **Embroidery Fonts Plus ( EFP )** software icon from your computer ( desktop ).



7. Click on **Load Lettering**



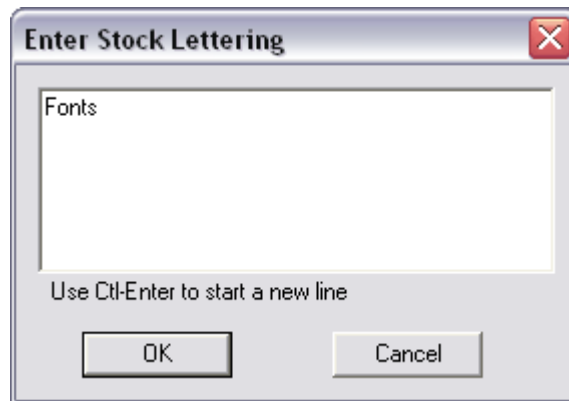
8. Double click on this font, and it should be loaded into the software now.



9. Click on " C " on the right menu.



10. Type in your letters.



11. Now the font is loaded into screen on **Current Selected Font**.

